



Let **UK** Home

2 Bedrooms

Flat

**Located
in Manchester**

£1,250 Per Month



pmadmin@letukhome.co.uk

<https://www.letukhome.co.uk/>

01615219812



Harrison Street Manchester

M4 7BF



Let UK Home are excited to offer this stunning two bedroom apartment in The Loom Building, perfectly located in vibrant New Islington.

The property offers a spacious open plan living and dining room through to kitchen, which is fully integrated with the latest appliances. The master bedroom offers plenty of space and comes with en-suite shower room. The second double bedroom also offers plenty of space. The stylish house bathroom comes with shower over bath.

The apartment is adjacent to New Islington tram stop, providing direct access to the city center, MediaCity, and the airport. Piccadilly and Ardwick train stations are also within walking distance, offering convenient transportation to easily reach Manchester and surrounding areas. Ancoats/Ducie Street bus stop is within walking distance, with multiple routes covering the entire city. In addition, the A57 (M) highway entrance is nearby, making car travel convenient.

The apartment is close to several high-quality schools. It is easily accessible via public transport or cycling to renowned universities such as Manchester Metropolitan University and the University of Manchester. Meanwhile, the surrounding area has a number of excellent primary and secondary schools, providing a wide range of educational options.

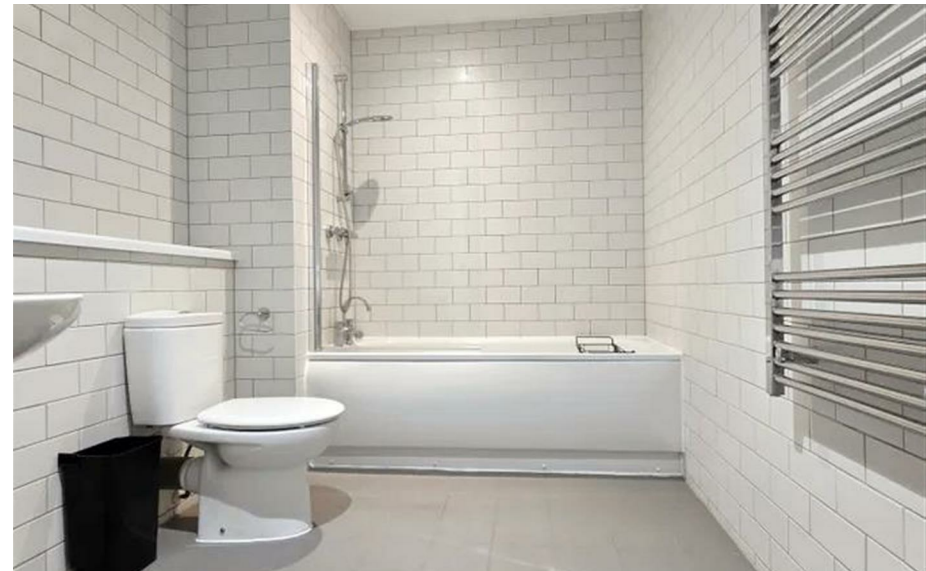
The area around the apartment is surrounded by vibrant independent cafés, bars, and restaurants, perfectly combining modern living with a dynamic urban lifestyle. Urban Exchange is just a short walk away, where you can find an Aldi supermarket

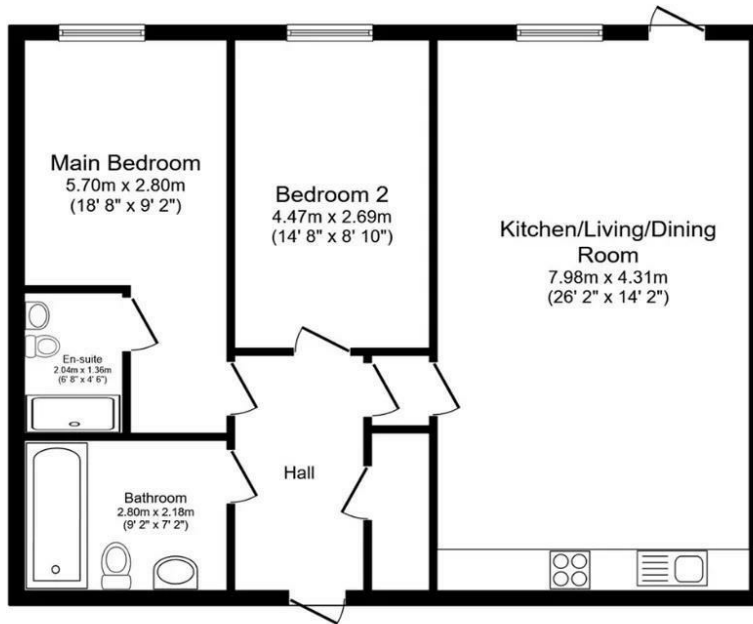
Harrison Street Manchester

£1,250 Per Month

- Fully Furnished
- Close to Transport Links

- Close to Local Shops
- Close to Universities





Let **UK** Home

1/F, St James Tower 7 Charlotte
Street
Manchester
M1 4DZ

01615219812

padmin@letukhome.co.uk

Total floor area 79.8 sq.m. (859 sq.ft.) approx

This floor plan is for illustrative purposes only. It is not drawn to scale. Any measurements, floor areas (including any total floor area), openings and orientation are approximate. No details are guaranteed, they cannot be relied upon for any purpose and they do not form part of any agreement. No liability is taken for any error, omission or misstatement. A party must rely upon its own inspection(s).
Plan produced for Henry Wiltshire. Powered by www.focalagent.com

Council Tax Band:

Local Authority:

Agents Note: Whilst every care has been taken to prepare these particulars, they are for guidance purposes only. All measurements are approximate and are for general guidance purposes only and whilst every care has been taken to ensure their accuracy, they should not be relied upon and potential buyers/tenants are advised to recheck the measurements.

Energy Efficiency Rating		Current	Potential
Very energy efficient - lower running costs			
(92 plus) A			
(81-91) B			
(69-80) C			
(55-68) D			
(39-54) E			
(21-38) F			
(1-20) G			
Not energy efficient - higher running costs			
England & Wales	EU Directive 2002/91/EC		

<https://www.letukhome.co.uk/>